



Believing in the worth of every individual, we are a nurturing, Christian sanctuary of learning, where all can flourish. We aspire for everyone to achieve heights of success, to deepen courage and to experience breadth of creativity, knowing the joy of God's love.

LIVING OUR VISION

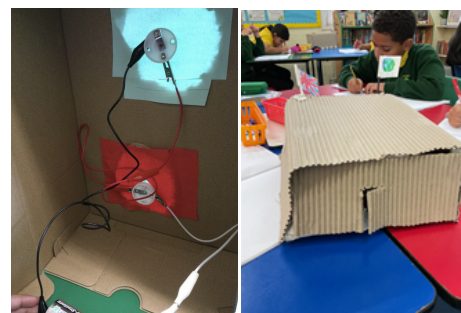
Autumn 1 2024



Dear Parents and Carers,

It has been an incredibly busy start to the new academic year and it is hard to believe that it is half term already. The children have settled really well into their new classes and there is a very purposeful learning climate around the school. The careful planning from staff and the children's positive attitudes to learning have resulted in many fantastic opportunities for the children to make excellent progress at school. The following few examples are some of the many highlights:

- Year 6 designed Anderson shelters on computer software and are currently building their physical models.
- In Year 4, the children have been making real, working traffic lights by applying their learning about electrical circuits and switches.
- In Year 3, the children explored how artists use thread, cloth and paint to make composite artworks. After studying the art work of Hannah Rae and Alice Kettle, the children painted fabric before finishing it off with some simple stitches.



- The children in Year 2 learned about the importance of democracy and how not every adult has always had the power to vote. When voting for their favourite chocolate bar, the girls had to campaign to be included just like Emily Davidson and the Suffragettes at the turn of the twentieth century.

- Our Reception children were scientists and investigated the properties of different materials. They investigated which materials were waterproof so that they could design an umbrella for the gingerbread man. Our new nursery children have been learning to recognise and order numbers.

Lots of school trips have run this half term. The pupils in 6 Birch have been to *Into University* for the week and had many new experiences including a fabulous trip to the Globe theatre. Pupils in Year 5 visited the immersive Moonwalker exhibition to inspire their writing about the Apollo moon landings.

Our Junior Leadership Team has been interviewed and appointed. Many of our new leaders have started their roles. Our worship leaders met with Bishop Lusa to prepare for an interschool, interfaith debate that will take place over the next few months.



Thank you to all of you for all the generous harvest contributions that you have sent in. The school celebrated its harvest assembly and the food has now been added to our foodbank. Please let the office know if you would like support from our foodbank or if you are able to volunteer to help with its distribution.



The children have also been enjoying the benefits of our refurbished playground. New soft-pore tarmac and astroturf has been laid, with all of the wooden furniture having been refurbished also. Planting has been taking place to add further splashes of colour and our outdoor classroom is currently being tended to so that the children can make even more use of this space to support their learning. After Christmas our attention will turn to our allotments and planting in spring. If you are a parent with green fingers and you would like to get involved with helping the children, please contact the office.



Please check on the next page for information connected with our parent and carer group, The Keble Collective. Coffee mornings are the first Friday of every month. Come and meet other parents and learn more about school life.



Please remember to check out our news and gallery on our website. <http://www.johnkeble.com>

I wish you all a good and restful holiday.

Catherine Allard.

School starts again on Monday 31st October for the children

Please remember that the morning gate is open from 8.30-8.40am. Formal lessons start at 8.45am. Children brought to school after 8:40am need to be brought to the front office to ensure they are registered appropriately.

For the latest news, please remember to check out what is happening on our X (formerly Twitter) feed @JohnKebleBrent, we post at least twice a week. You can also read about our latest news and view images in the gallery on our website. <http://www.johnkeble.com>

A reminder that our school office is open from 8am-4.30pm and closes between 1.30pm-2.30pm for lunch. The office will be closed during the holidays.



From The Keble Collective - The Parents, Teachers and Friends Association at John Keble.

Greetings from the Keble Collective, we hope everyone has settled into a new school year and that your children are thriving. It's lovely to see so many new parents joining the Keble Collective and getting involved with the coffee mornings. A big thank you to Mr. Martin for his last coffee morning session on supporting children with reading at home. Our upcoming coffee morning sessions are Friday 1st November and Friday 6th December. Mrs Allard will be talking through the school's approach to behaviour and how this approach can support positive parenting.

Our big event this term will be the Christmas Fair, which will be held on Friday 13th December from 3.30pm. If you are able to help at the event please get in touch and let us know. We need help in the run-up doing things like planning stalls and games and securing raffle prizes. On the day we will need help setting up, running and clearing up after the event. Many hands make light work, so please volunteer to do whatever you can. New for this year's fair - we are hoping to have a little market with stalls run by parents and students selling their own homemade items – if you are interested in this, please do come and speak to one of the Keble Collective at the next coffee morning, or you can message us in the WhatsApp group or send an email to: KebleCollective@gmail.com The market can only go ahead if we have enough people wanting to get involved.



We wish you all a relaxing half term holiday and look forward to seeing you in the next half of term!

If you would like to get involved or have any ideas or questions please contact us on: KebleCollective@gmail.com or follow us on Instagram [@KebleCollective](https://www.instagram.com/KebleCollective)

If you would like to join the school community WhatsApp group please scan the QR code below.



Rooted together in love, growing without limits

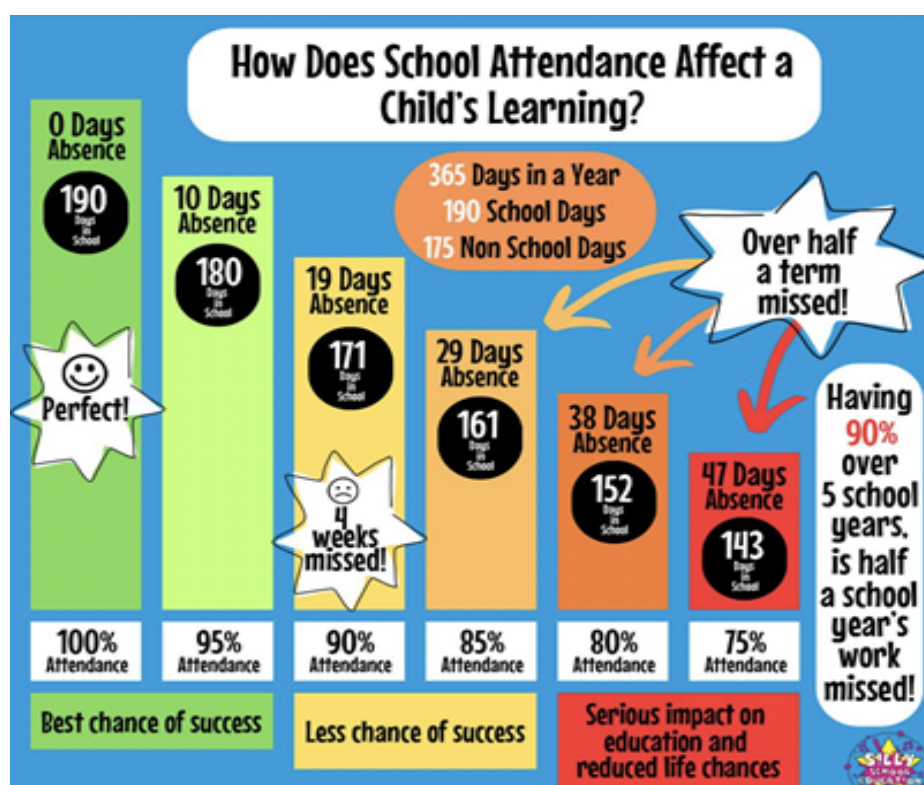


Term Dates 2024-2025

Autumn Term 2024 (73 days + 2 INSET)	
Inset Day	Monday 2nd September 2024 and Tuesday 3rd September 2024
Term starts	Wednesday 4th September 2024
Half term	Monday 21st October – Friday 25th October 2024
Term ends	Friday 20th December 2024 at 1.30pm
Spring Term 2025 (59 days + 1 INSET)	
Inset Day	Monday 6th January 2025
Term starts	Tuesday 7th January 2025
Half term	Monday 17th February – Friday 21st February 2025
Term ends	Friday 4th April 2025 at 1.30pm
Summer Term 2025 (58 days + 2 INSET)	
Term starts	Tuesday 22nd April 2025
Bank holiday	Monday 5th May 2025
Half term	Monday 26th May – Friday 30th May 2025
Term ends	Friday 18th July 2025 at 1.30pm
Inset Day	Monday 21st July and Tuesday 22nd July 2025

This year's dates and next year's dates are published on this letter and our website. Please do not request leave in term time. It will not be granted. Please ensure that your child/ren are back in London ready to start school at the start of the new half term. Action, including fines, will be taken by Brent Council against families whose children are not back in school. There is a clear correlation between children's attendance at school and their academic performance.

Children with the best attendance have the best results.





Upcoming Dates for Parents:

8	Monday 21st October - Friday 25th October Half Term Break	
9	Monday 28th October: Return to school for all pupils Thursday 31st October 8.45am Nursery stay and play starts (every Thursday morning thereafter) Friday 1st November 8.45am Reception stay and read starts (every Friday morning thereafter) Friday 1st November 8.45am PTFA coffee morning in the PAH	N R 1 2 3 4 5 6 N R N R 1 2 3 4 5 6
10	6 Willow 'Into University' workshops all week Friday 8th November 9.00am Poetry Slam Reception & Years 1,2 & 3 Friday 8th November 2pm Poetry Slam Years 4,5 & 6	6 R 1 2 3 4 5 6
11	Friday 15th November - Year 3 trip to the Natural History Museum Friday 15th November 9.00am 5 Elm Assembly (to parents)	3 5
12	Junior Leadership Team: Eco-Leaders and Health Leaders Event week	N R 1 2 3 4 5 6
13	Monday 25th November Year 6 visit Bridge Park Leisure Centre (Junior Citizens event) Thursday 26th November Year 4 visit to St. Claudine's to watch the pantomime Friday 29th November 9.00am: 5 Pine Assembly (to parents)	6 4 5
14	Tuesday 3rd December Mufti Day (donate to the Christmas fair to wear own clothes) Wednesday 4th December Year 6 flu vaccinations. Thursday 5th December Year 4 educational visit to Neasden temple Friday 6th December 8.45am PTFA coffee morning in the PAH	N R 1 2 3 4 5 6 6 4 N R 1 2 3 4 5 6
15	Tuesday 10th December Mufti Day (donate to the Christmas fair to wear own clothes) Thursday 12th December Christmas Lunch for children. Thursday 12th December 9.00am EYFS Dress Rehearsal (to 1 and 2 and siblings) Friday 13th December 9.00am KS1 Dress Rehearsal (to 3 & 4 and siblings) Friday 13th December Christmas Fair	N R 1 2 3 4 5 6 N R 1 2 3 4 5 6 N R 1 2 3 4 5 6
16	Tuesday 17th December 9.00am EYFS Christmas Nativity Wednesday 18th December KS1 Christmas Nativity	N R 1 2
17& 18	End of term break Monday 23rd December - Friday 3rd January 2025 Monday 6th January 2025 INSET School is closed to children.	

The term dates for the next academic year have been scheduled and are as follows:

Term Dates 2025-2026

Autumn Term 2025 (73 days + 2 INSET)	
Inset Day	Monday 1st September 2025 and Tuesday 2nd September 2025
Term starts	Wednesday 3rd September 2025
Half term	Monday 27th October – Friday 31st October 2025
Term ends	Friday 19th December 2025
Spring Term 2026 (58 days + 1 INSET)	
Inset Day	Monday 5th January 2026
Term starts	Tuesday 6th January 2026
Half term	Monday 16th February – Friday 20th February 2026
Term ends	Thursday 2nd April 2026
Summer Term 2026 (59 days + 2 INSET)	
Term starts	Monday 20th April 2026
Bank holiday	Monday 4th May 2026
Half term	Monday 25th May – Friday 29th May 2026
Term ends	Friday 17th July 2026
Inset Day	Monday 20th July and Tuesday 21st July 2026